

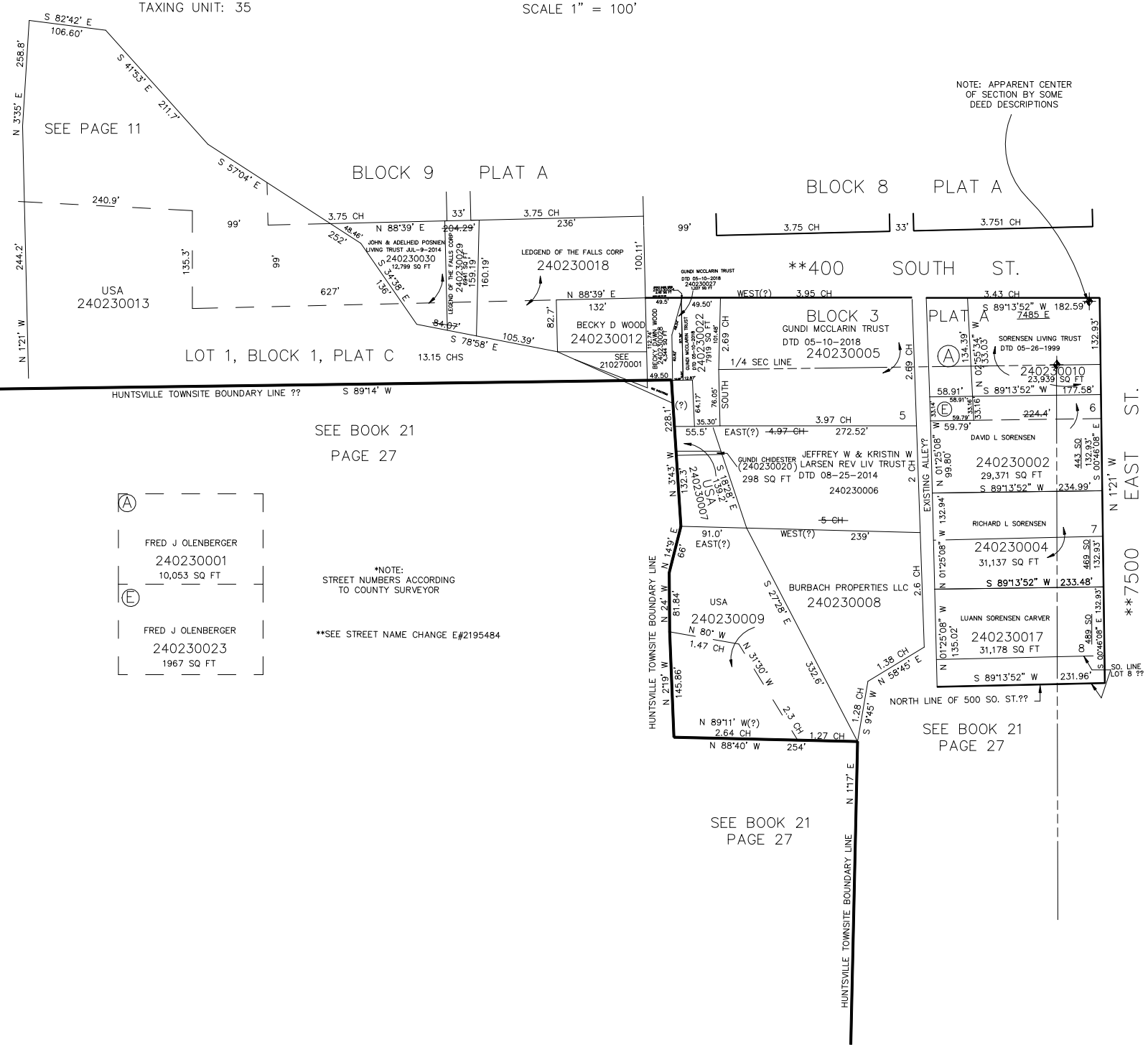
PART OF THE S 1/2  
SECTION 18, T.6N., R.2E., S.L.B. & M.  
& LOT 1, BLOCK 1, PLAT C & LOTS 5, 6, 7 & 8 BLK. 3, PLAT A

IN HUNTSVILLE TOWNSITE

SCALE 1" = 100'

TAXING UNIT: 35

NOTE: APPARENT CENTER  
OF SECTION BY SOME  
DEED DESCRIPTIONS



SEE PAGE 11

BLOCK 9 PLAT A

BLOCK 8 PLAT A

\*\*400 SOUTH ST.

LOT 1, BLOCK 1, PLAT C

BLOCK 3  
GUNDI MCCLARIN TRUST  
DTD 05-10-2018  
240230005

PLAT A  
S 89°13'52" W 182.59'  
7485 E

SORENSEN LIVING TRUST  
DTD 05-26-1999  
240230010  
23,939 SQ FT

S 89°13'52" W 177.58'  
58.91'

DAVID L SORENSEN  
240230002  
29,371 SQ FT

RICHARD L SORENSEN  
240230004  
31,137 SQ FT

S 89°13'52" W 233.48'

LUANN SORENSEN CARVER  
240230017  
31,178 SQ FT

S 89°13'52" W 231.96'

NORTH LINE OF 500 SO. ST.??

\*\*7500 EAST ST.

(A)	FRED J OLENBERGER 240230001 10,053 SQ FT
(E)	FRED J OLENBERGER 240230023 1967 SQ FT

SEE BOOK 21  
PAGE 27

\*NOTE:  
STREET NUMBERS ACCORDING  
TO COUNTY SURVEYOR

\*\*SEE STREET NAME CHANGE E#2195484

SEE BOOK 21  
PAGE 27

SEE BOOK 21  
PAGE 27